



SNA-VA 2026 – Innovative Solution Session

**DESIGNING CAFETERIAS
THAT DRIVE BEHAVIOR,
PARTICIPATION, & HEALTH**

About Us



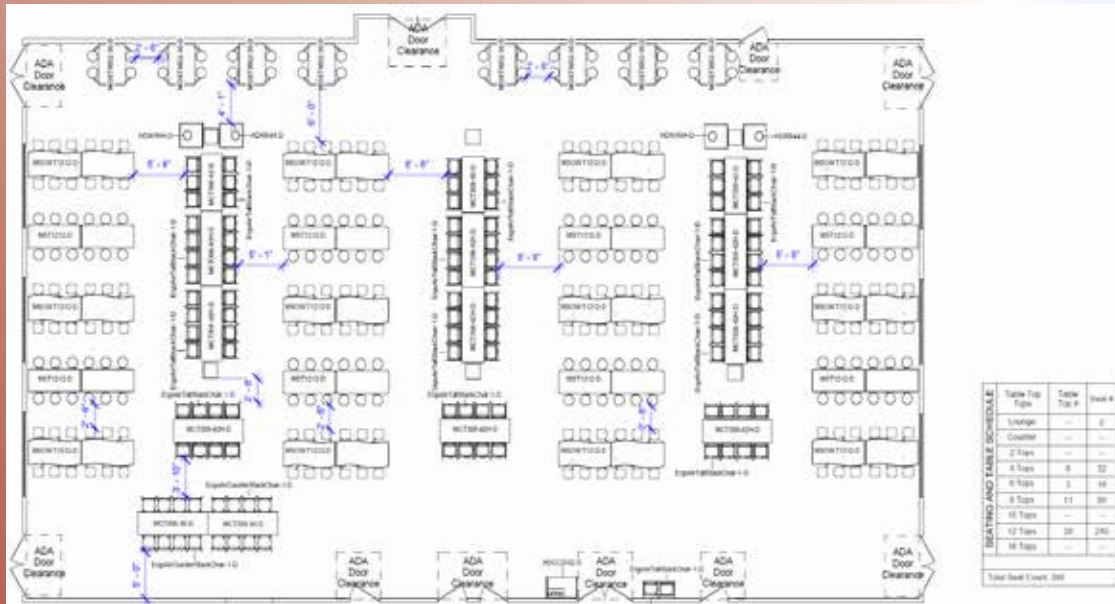
Cory Clark



SESSION OBJECTIVES

- Identify Psychological & Environmental Factors Influencing Student Choices
- K-12 Changes Happening Now
- Evaluate how design impacts meal participation & revenue
- Applying Strategies to Plan or Remodel Cafeterias
- Significant Differences Between School Grade Levels

WHY CAFETERIA DESIGN MATTERS



Cafeterias are behavior-shaping environments

FOOD FUELS CONVERSATION THROUGH SHARED SPACES



LUNCH LEAVING THE LUNCHROOM

School Districts across the country always ask themselves the age-old question, “how do we get more students participating in our nutrition program?”



COMMON THEMES

- One Type Of Table
- Little Color In Space
- School Pride Is Non-Existent
- Furniture Is Not Mobile
- Products Are Damaged





DIFFERENT AGE GROUPS



ELEMENTARY



MIDDLE SCHOOL



HIGH SCHOOL



Solutions
Are
Possible!

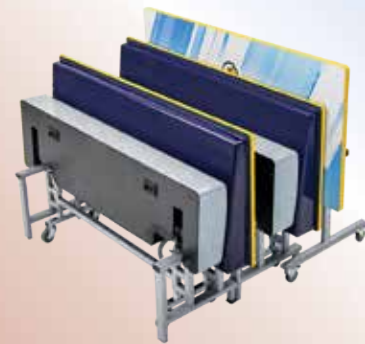


WHAT MAKES FOR GOOD FURNITURE?

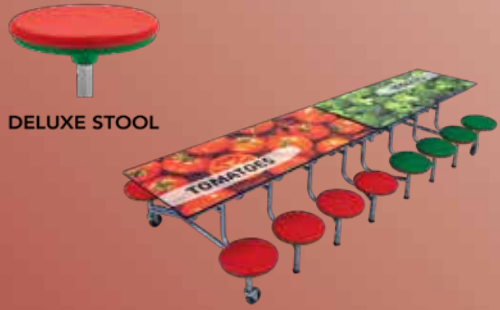
- Safety
- Durability
- Mobility
- Product variety
- Return on Investment

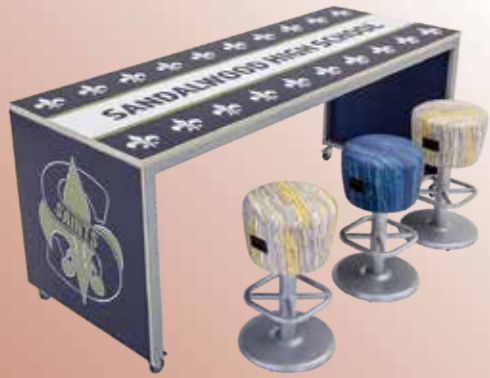


CREATE A RESTAURANT TYPE OF ENVIRONMENT

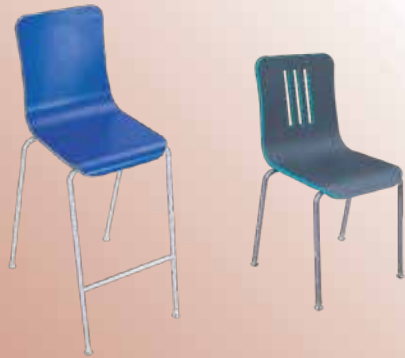
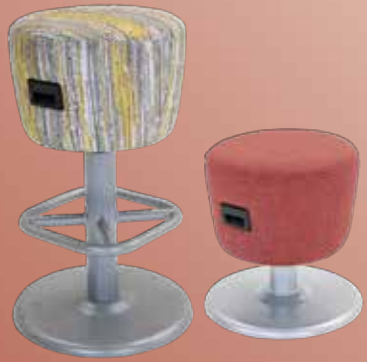


BENCH & STOOL LOOK





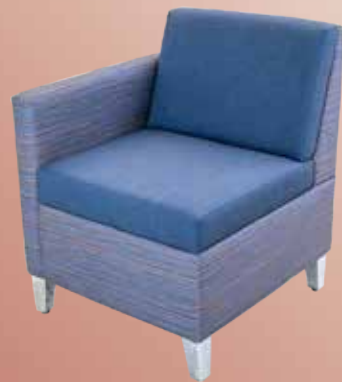
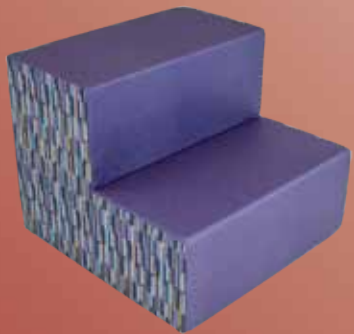
DYNAMIC FOOD COURT OPTIONS



SIT IN STYLE



SOFT SEATING



RECEPTACLES, CONDIMENT CABINETS, & PARTITIONS



SIGNAGE GRAPHICS DECOR





SIGNAGE



GRAPHICS



DECOR

REASONS TO NOT MODERNIZE

1. Rectangle and round seating fits the most students, and we don't have the space for anything else
2. The decision makers won't go for it
3. Too expensive

K-12 DINING COMMONS AND K-12 FOOD COURTS

FURNITURE AND SIGNAGE GRAPHICS DECOR

CASE STUDY: MERCER COUNTY INTERMEDIATE

THE AMTAB ADVANTAGE: RETURN ON INVESTMENT



SCHOOL IMPACT

1

348 students are starting their day with a nutritious breakfast, an impressive **36% INCREASE** (Previously 256 Students)



2

591 students are now eating a healthy lunch, an impressive **19% INCREASE** (Previously 498 Students)



3

Positive social-emotional development and building community



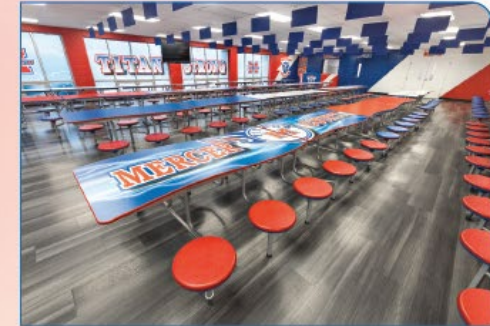
4

Dopamine, Endorphins, Oxytocin, and Serotonin are supporting well-being and learning



5

After modernizing, extra \$13,600 each month in school meal reimbursements



Chris Minor – Food Service Director
Mercer County Schools

I have always been a huge supporter of AmTab and going forth I will still be. Again, thank you for making Mercer County Schools a priority.



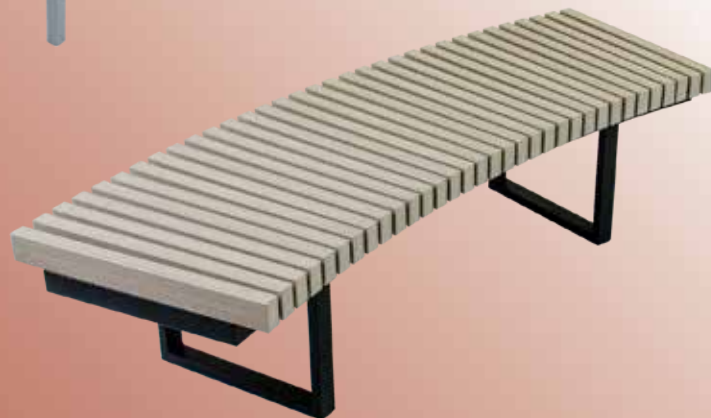
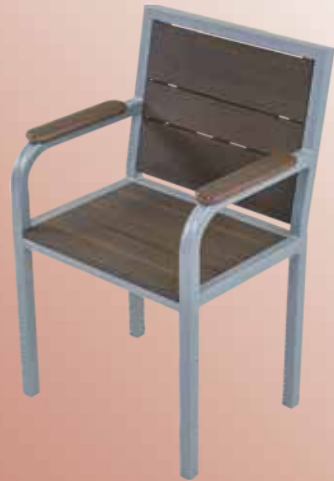
600 Eagle Drive • Bensenville, IL 60106 • (Office) 630 301-7600 • info@amtab.com • www.amtab.com



INSTALLATION



What's New



TESTIMONIALS

“ Our participation has increased significantly here. When you combine great food with high-quality furniture, signage, graphics, and décor the students get so excited to come in every day. I recommend **AmTab** to all directors looking to modernize their K-12 Food Court.”

John Hood
Food Service Director
Rusk Independent School
District



“The students absolutely love their new food court, and it’s thanks to **AmTab**! Student engagement and participation has increased inside our food court. In our new environment, we are able to maximize our educational square footage with the new furniture as we have more community events and after-school meetings here.”

Stephanie Bruce Principal
Pennfield Middle School



“We are excited about the new Learners’ Union for our kids at St. Helena College and Career Academy. Since the change, we’ve seen an uptick in our school lunch numbers, a calmer atmosphere, and happier students.”

Kelli Joseph—
Superintendent
St. Helena Parish School
District





THANK YOU!