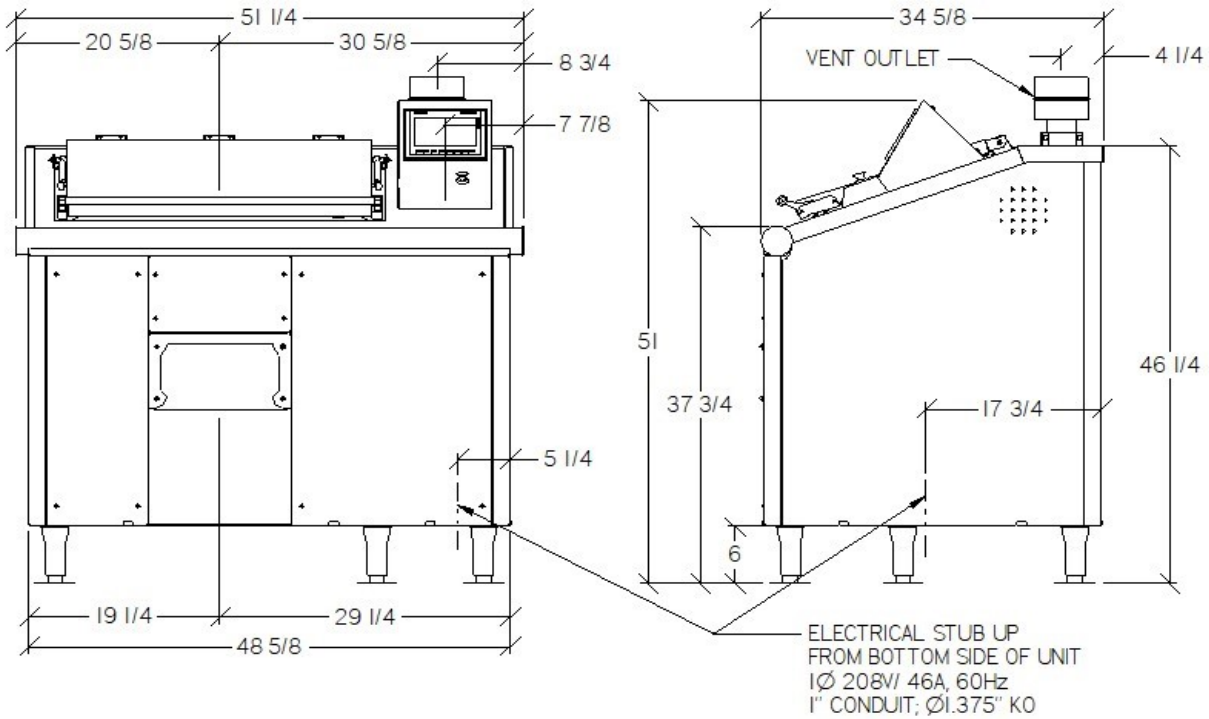




# CA-250-V Vented Compost Accelerator



## CA-250-V SPECIFICATIONS

- Dimensions:** 51.0”H x 51.25”W x 34.6”D
- Weight:** 650lbs / 295 Kg
- Construction:** Welded 304 Stainless Steel
- Protection Class:** IP22
- Vent Outlet:** Ø2.00” Sanitary Flange
- Operating Voltage:** 200-240VAC / 440-480VAC, 3Ø
- Operating Amps:** 46A @208VAC, 1Ø  
25A @208VAC, 3Ø
- Elec. Connection:** Direct Wire to Connection Lugs
- Operating Amb. Temp.:** 35°F - 110°F / 2°C - 45°C
- Operating Max. Temp.:** 275°F / 135°C
- Drain Outlet:** 1/2” FNPT Drain Line

